

FULL BODY

NATURAL DESIGN

HYH8012SA HYH8013SA

SIZE:800X800MM



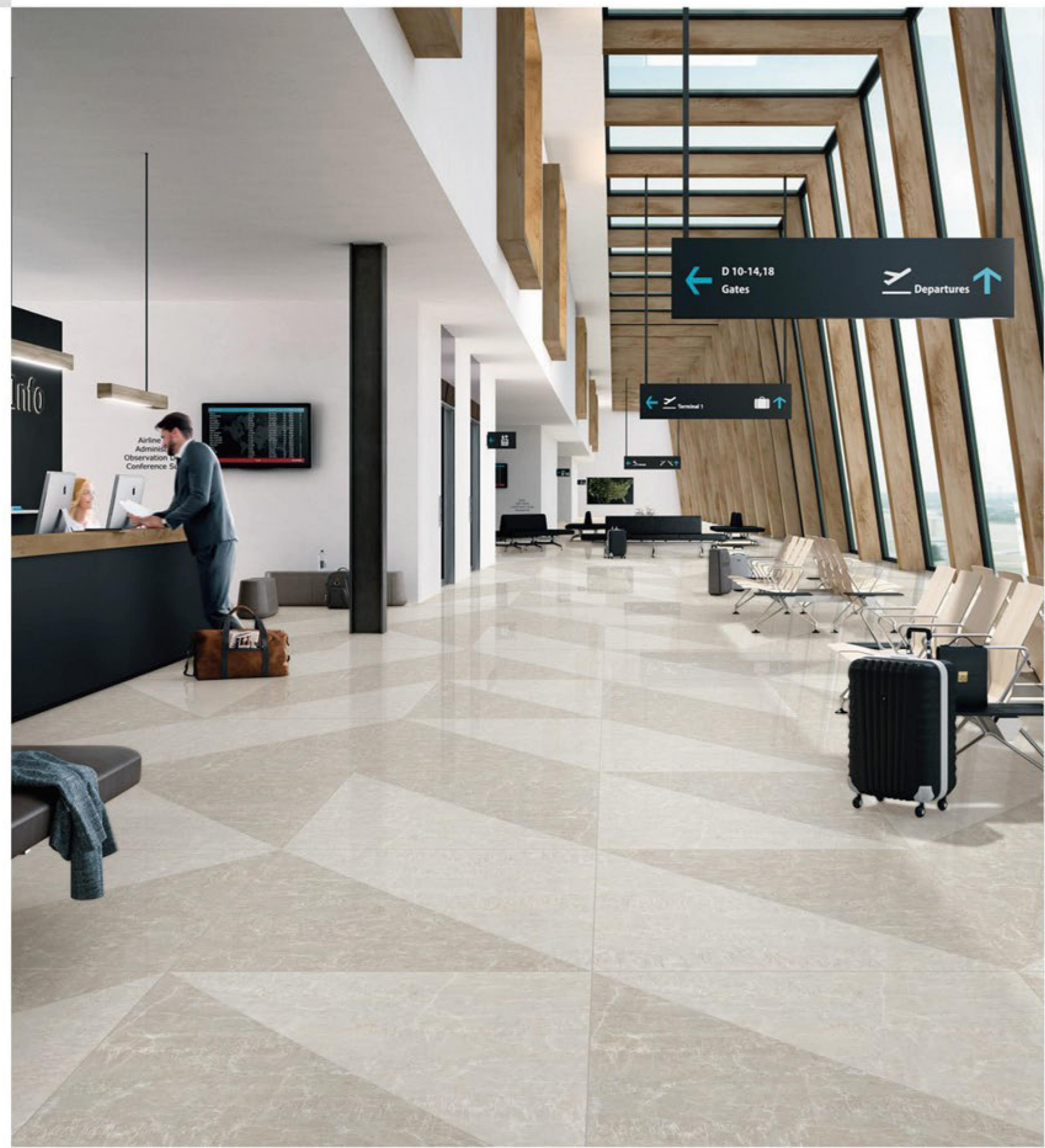
HYH8012SA

SIZE:800X800MM



HYH8014SA

SIZE:800X800MM



FULL BODY

NATURAL DESIGN



HYH8015SA

SIZE:800X800MM



HYH8016SA

SIZE:800X800MM

HYH8015SA

SIZE:800X800MM



FULL BODY

NATURAL DESIGN



HYH8016SA

SIZE:800X800MM



HYH8017SA

SIZE:800X800MM

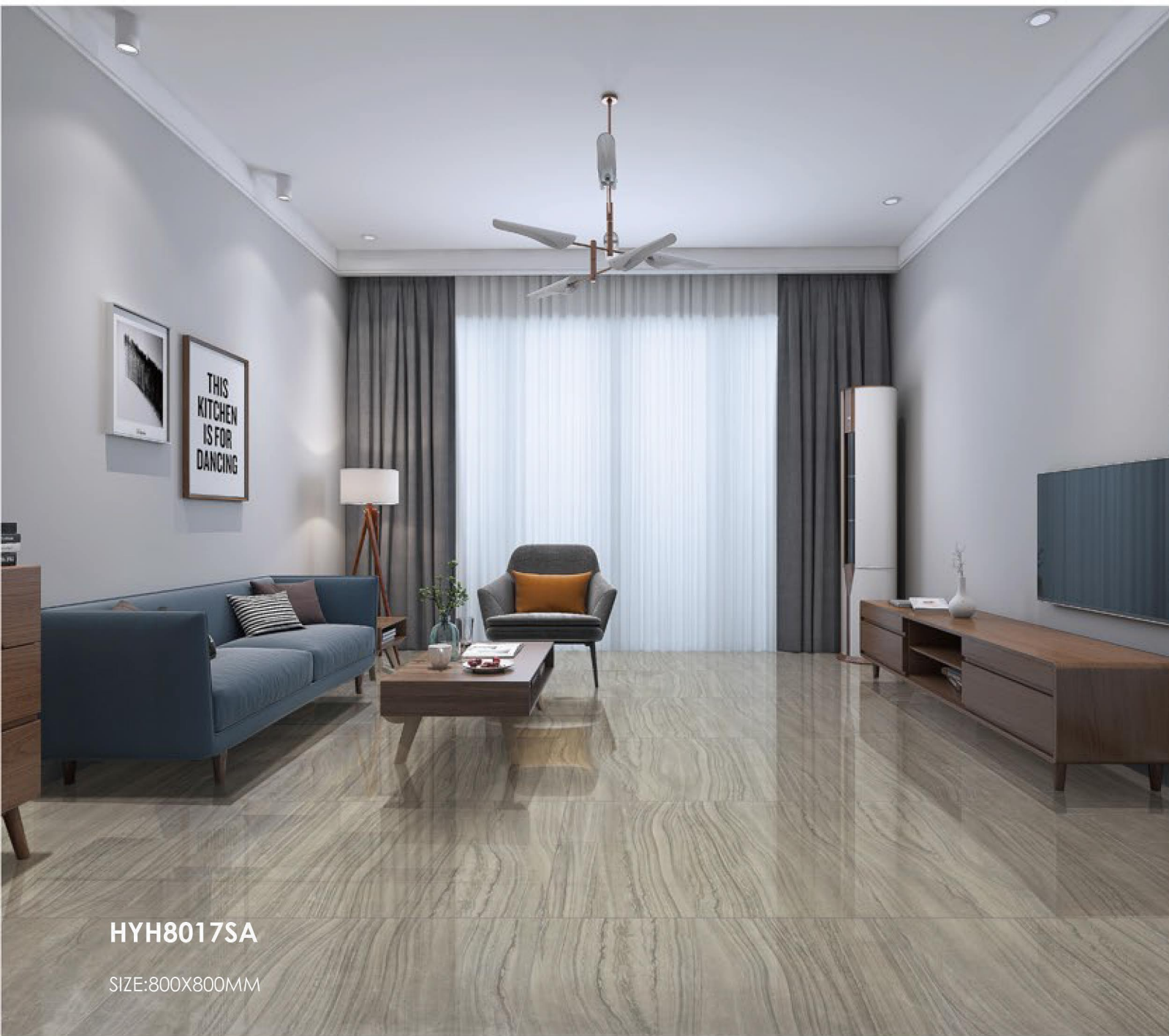


HYH8019SA

SIZE:800X800MM

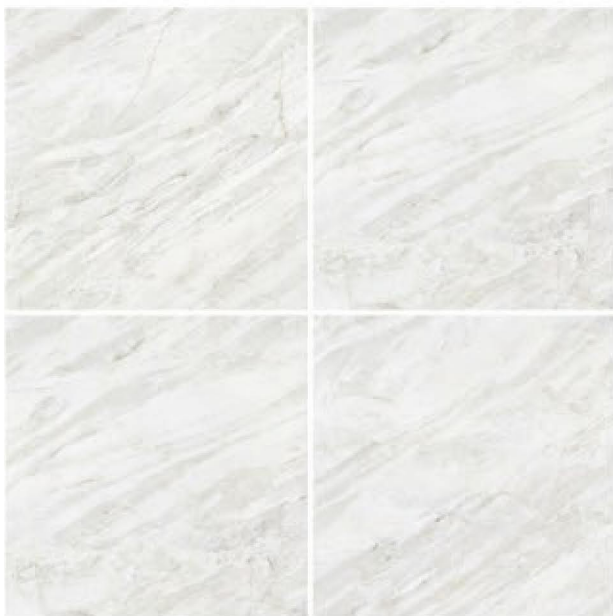
FULL BODY

NATURAL DESIGN



FULL BODY

NATURAL DESIGN



HYH8020SA

SIZE:800X800MM



HYH8022SA

SIZE:800X800MM



^
HYH8020SA

SIZE:800X800MM

<
HYH8022SA

SIZE:800X800MM

FULL BODY

NATURAL DESIGN



HYH8023SA

SIZE:800X800MM



HYH8023SA

SIZE:800X800MM



HYH8028SA

SIZE:800X800MM

FULL BODY

NATURAL DESIGN



HYH8018SA

SIZE:800X800MM



HYH8037SA

SIZE:800X800MM



HYH8042SA

SIZE:800X800MM

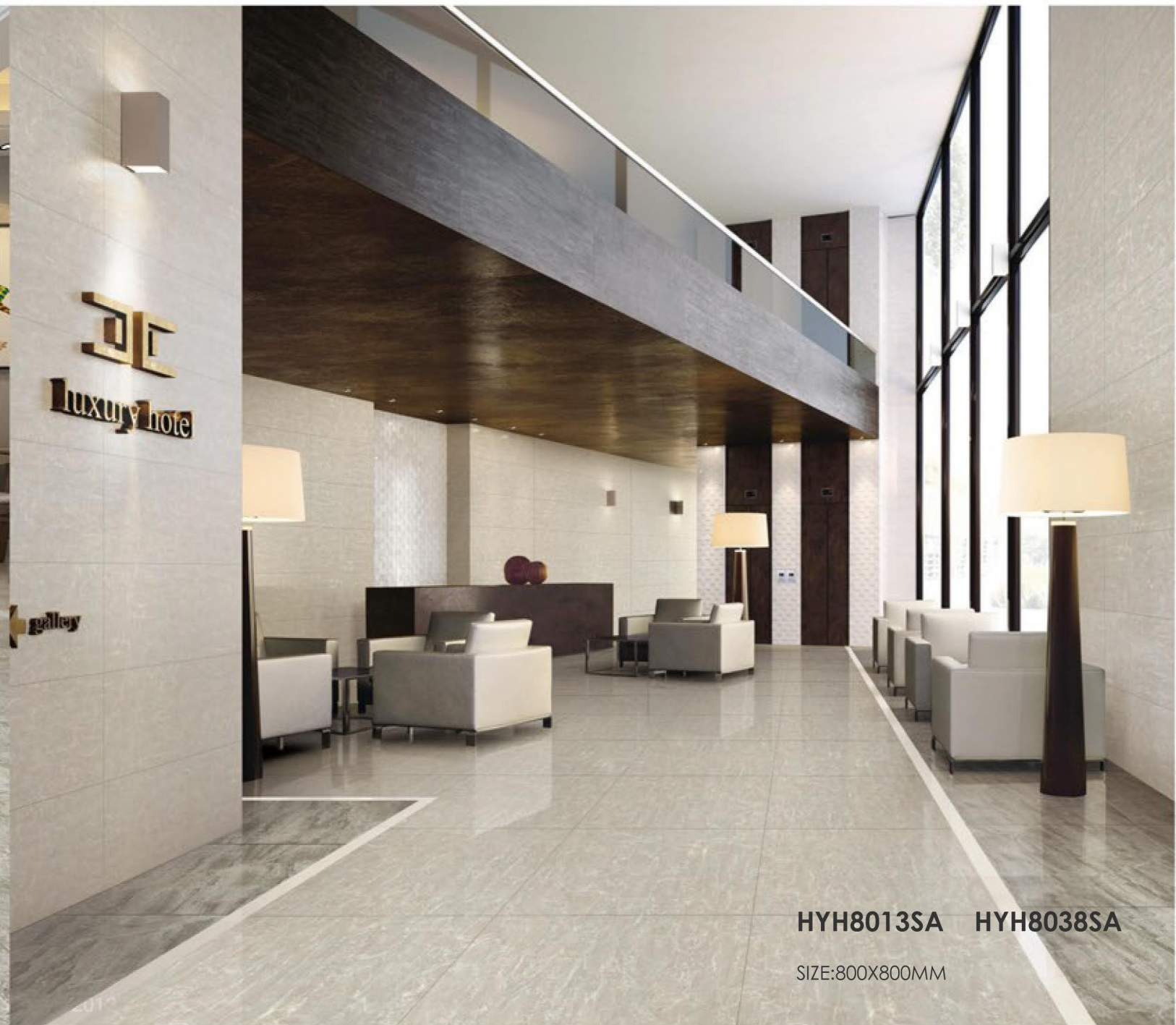


HYH8013SA

SIZE:800X800MM

FULL BODY

NATURAL DESIGN



FULL BODY

NATURAL DESIGN



HYH8058SA

SIZE:800X800MM



HYH8059SA

SIZE:800X800MM



HYH8059SA

SIZE:800X800MM

FULL BODY

NATURAL DESIGN



HYH8038SA

SIZE:800X800MM



HYH8046SA

SIZE:800X800MM

HYH8046SA

SIZE:800X800MM



FULL BODY

NATURAL DESIGN



HYH8060SA

SIZE:800X800MM



HYH8062SA

SIZE:800X800MM



HYH8061SA

SIZE:800X800MM



HYH8063SA

SIZE:800X800MM



HR8A919

SIZE:800X800MM



HR8308

SIZE:800X800MM



HR8220

SIZE:800X800MM



HR8221

SIZE:800X800MM



HR8905

SIZE:800X800MM



HR8303

SIZE:800X800MM

FULL BODY

NATURAL DESIGN



HR8A916

SIZE:800X800MM



HR8A910

SIZE:800X800MM



HR8A915

SIZE:800X800MM



HR8A911

SIZE:800X800MM



HR8A912

SIZE:800X800MM

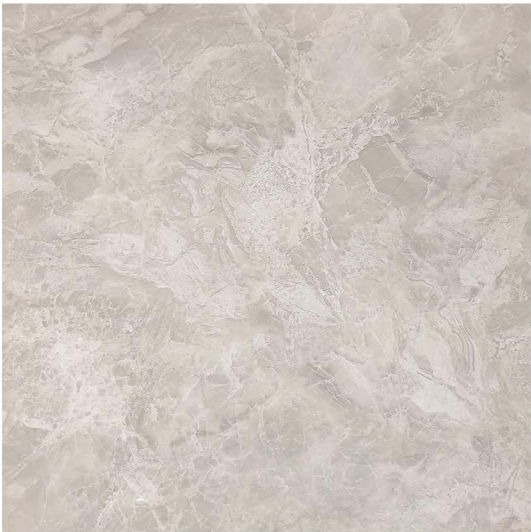
FULL BODY

NATURAL DESIGN



HGH8001

SIZE:800X800MM



HGH8002

SIZE:800X800MM



HGH8003

SIZE:800X800MM



HGH8005

SIZE:800X800MM



HGH8006

SIZE:800X800MM



HGH8007

SIZE:800X800MM



HGH8008

SIZE:800X800MM



HGH8009

SIZE:800X800MM

FULL BODY

NATURAL DESIGN



HGH8011

SIZE:800X800MM



HGH8012

SIZE:800X800MM



HGH8013

SIZE:800X800MM



HGH8016L

SIZE:800X800MM



HGH8017

SIZE:800X800MM



HGH8018

SIZE:800X800MM

FULL BODY

NATURAL DESIGN



HO8A311

SIZE:800X800MM



HO8A313

SIZE:800X800MM



HO8A312

SIZE:800X800MM



HO8A314

SIZE:800X800MM

FULL BODY

NATURAL DESIGN



HO8A315

SIZE:800X800MM



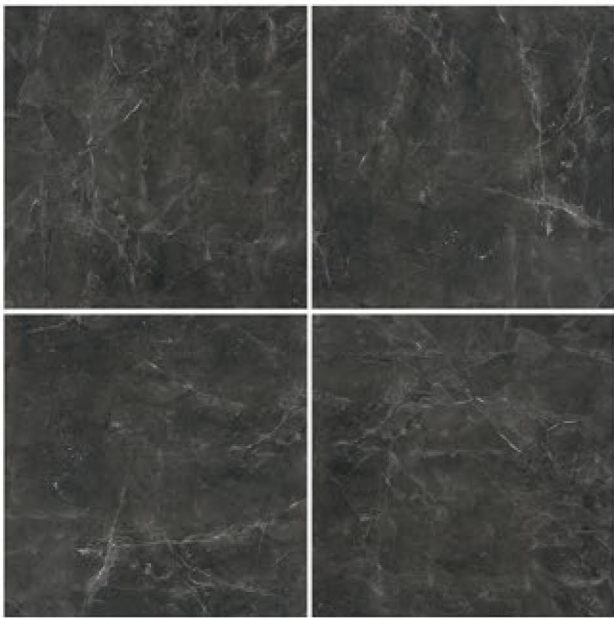
HO8B8557

SIZE:800X800MM



HO8A316

SIZE:800X800MM



HO8B800

SIZE:800X800MM

FULL BODY



HJS8205X

SIZE:800X800MM



HJS8206X

SIZE:800X800MM



HJS8601

SIZE:800X800MM



HJS8606

SIZE:800X800MM

FULL BODY



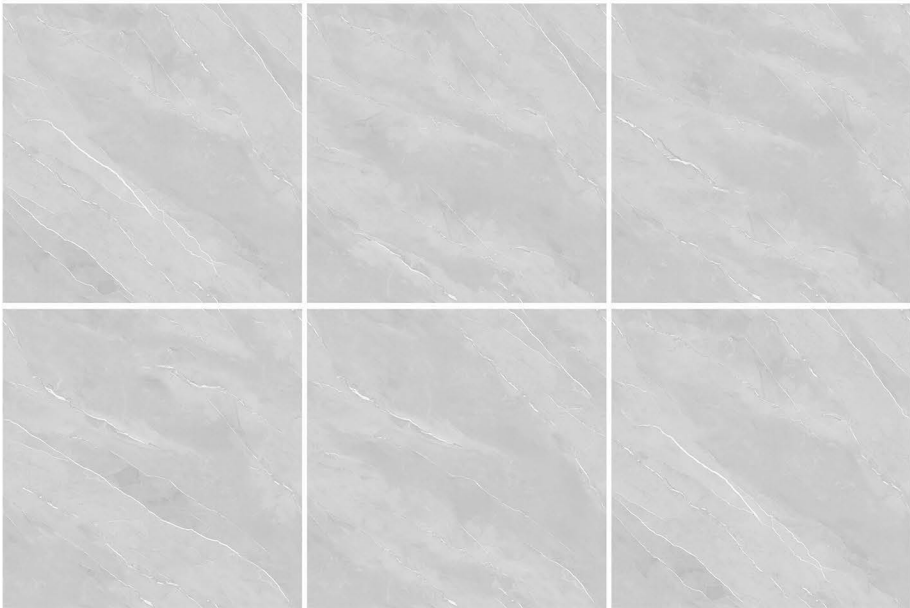
HJS8611

SIZE:800X800MM



HJS8615

SIZE:800X800MM



HJS8618

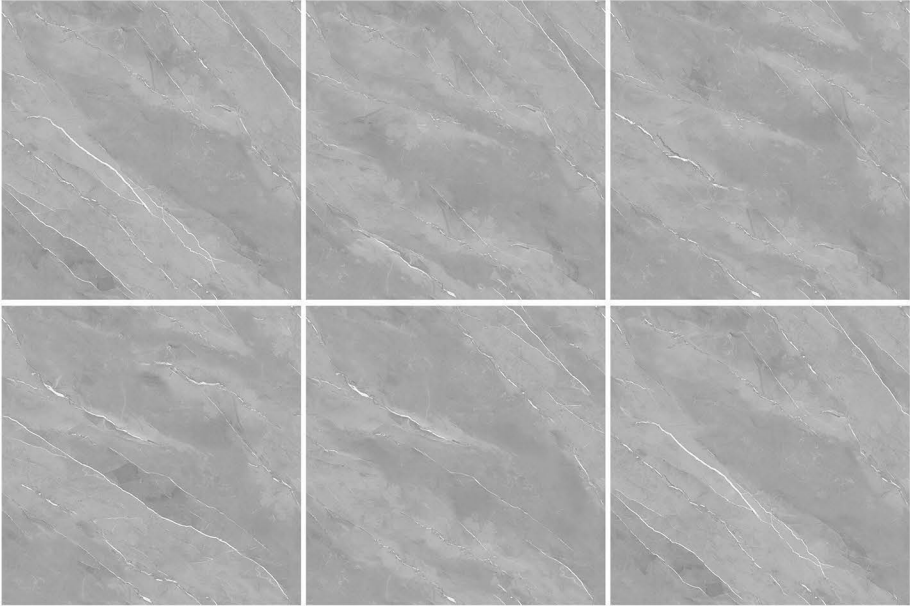
SIZE:800X800MM



HJS8865X

SIZE:800X800MM

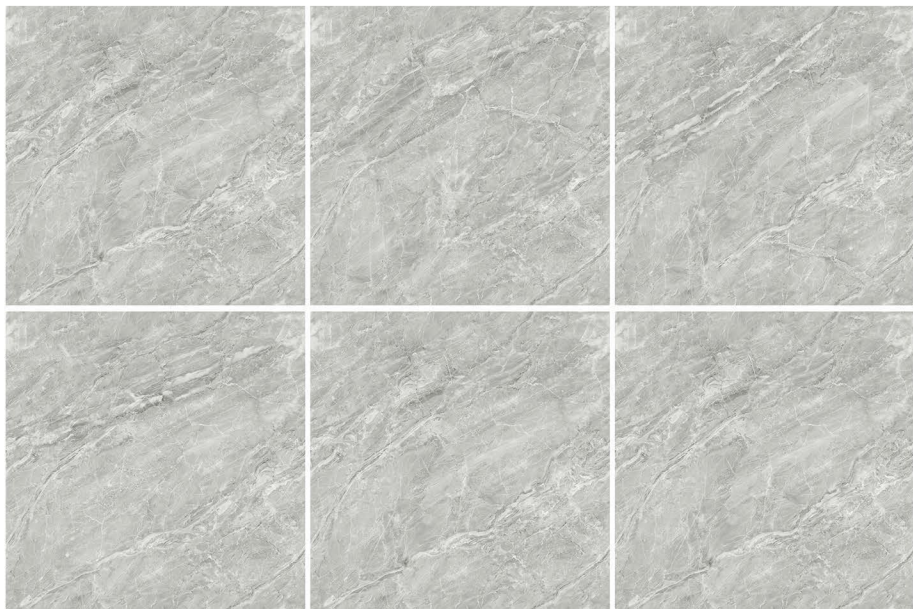
FULL BODY



HJS8619

SIZE: 800X800MM

FULL BODY



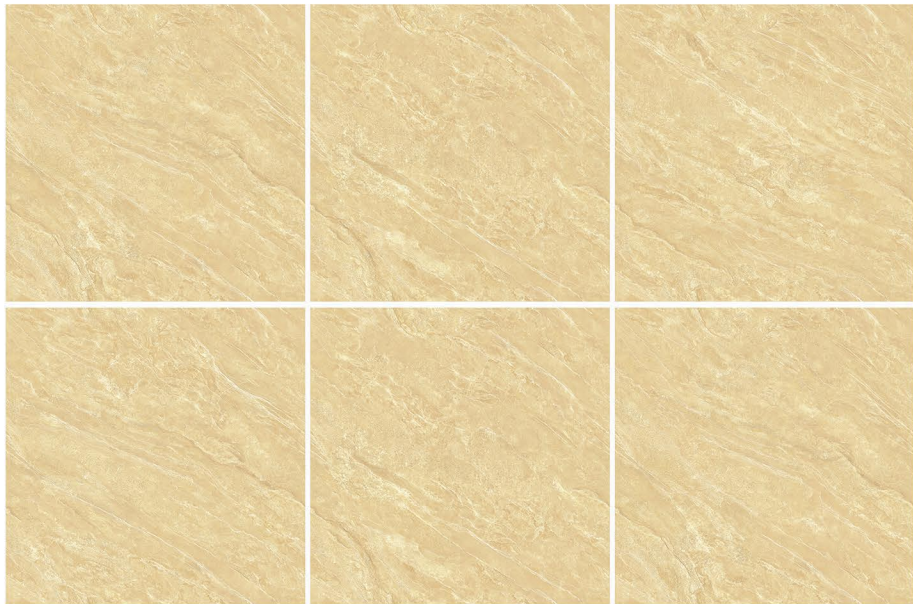
HJS8620

SIZE:800X800MM



HJS8622

SIZE:800X800MM



HJS8625

SIZE:800X800MM



HJS8627

SIZE:800X800MM

FULL BODY



HJS8632X

SIZE:800X800MM



HJS8633X

SIZE:800X800MM



HJS8672X

SIZE:800X800MM



HJS8675X

SIZE:800X800MM

FULL BODY



HJS8676X

SIZE:800X800MM



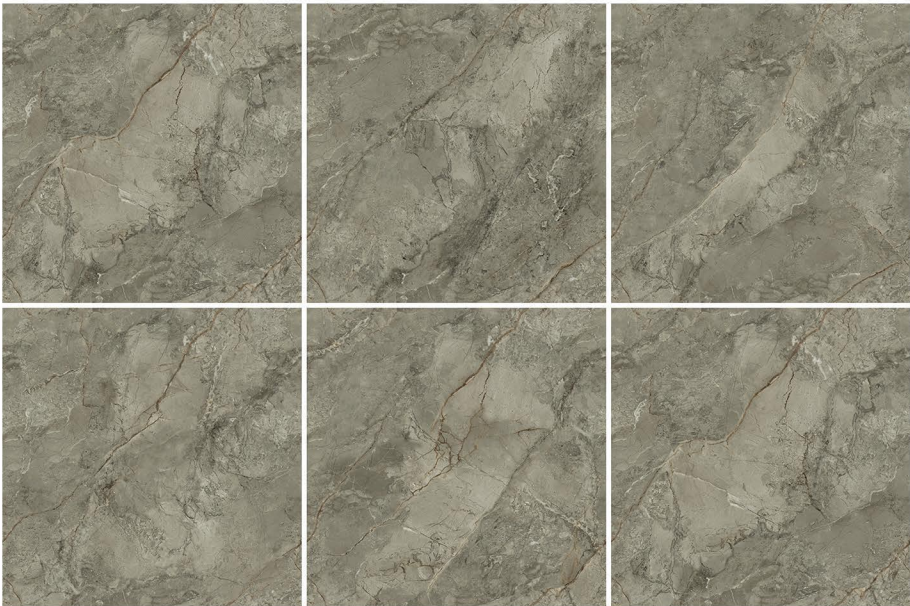
HJS8860

SIZE:800X800MM



HJS8861

SIZE:800X800MM



HJS8862X

SIZE:800X800MM

FULL BODY



HJS8863

SIZE:800X800MM



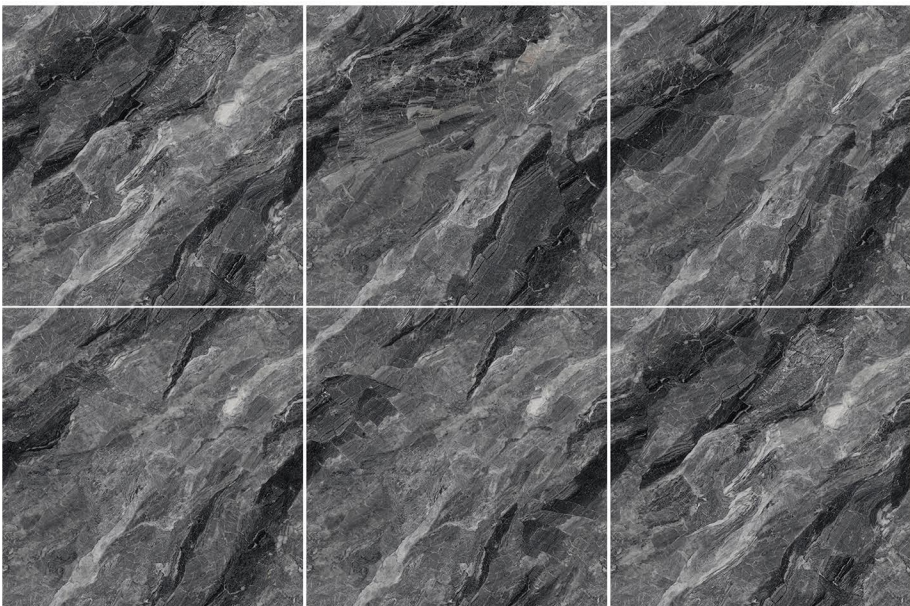
HJS8866X

SIZE:800X800MM



HJS8867X

SIZE:800X800MM



HJS8868X

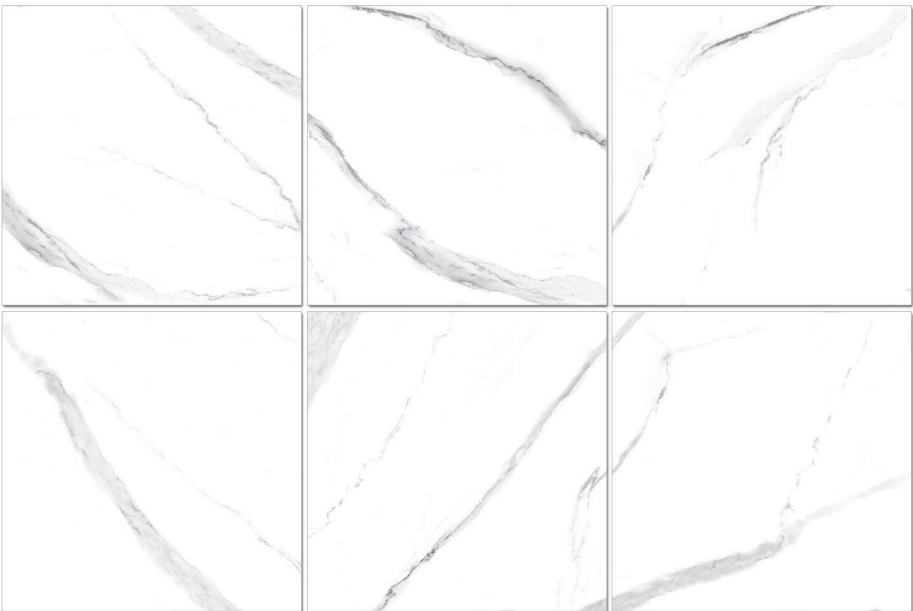
SIZE:800X800MM

GLAZED SURFACE



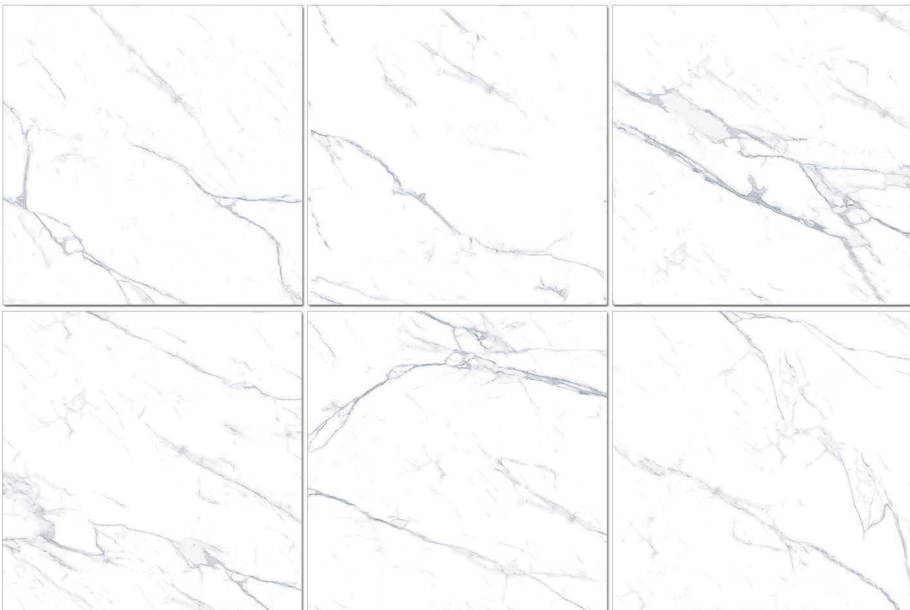
HW8611P

SIZE:800X800MM



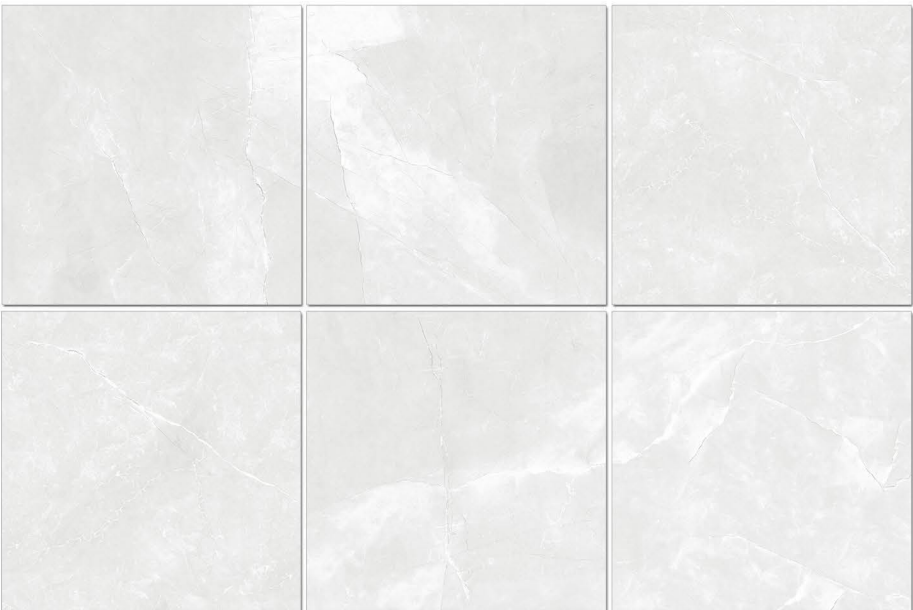
HW8631P

SIZE:800X800MM



HW8634P

SIZE:800X800MM



HW8760P

SIZE:800X800MM

GLAZED SURFACE



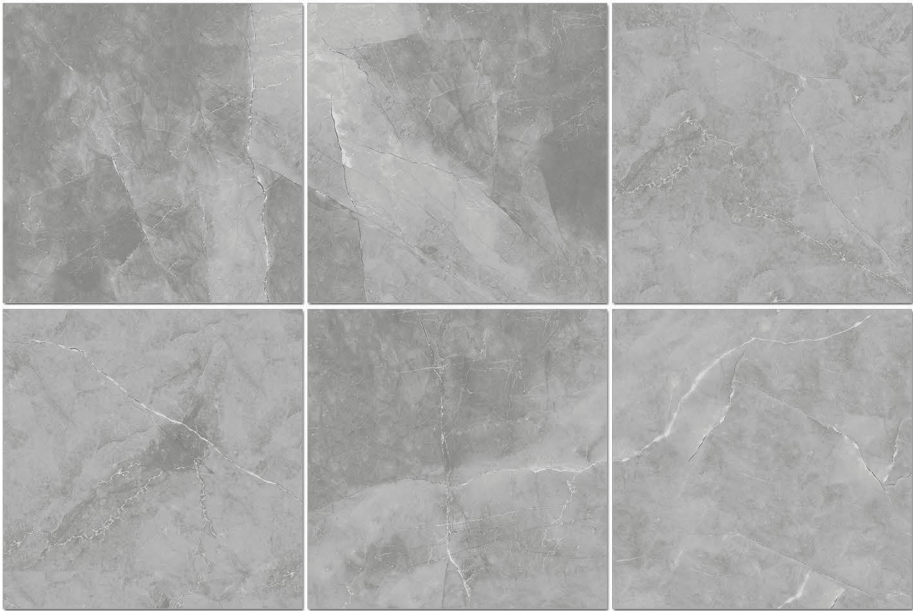
HW8763P

SIZE:800X800MM



HW8765P

SIZE:800X800MM



HW8766P

SIZE:800X800MM

Technical Performance

| 序号 | 检验项目 | 单 位 符 号 | 标 准 要 求 | | | 检 验 结 果 | | 判 定 |
|----|----------------------|------------|--------------------------------|-----------------------|-------------|-------------------|-----------|-----|
| 1 | 尺寸及偏差 | % | 边长 | 相 对 于 工 作 尺 寸的允许偏差 | ±0.6 | -0.04~-0.01 | | 合格 |
| | | mm | | | 最大值 ±2.0 | -0.3~-0.1 | | |
| | | mm | 厚度 | 工作尺寸≤11.0 | | 11 | | |
| | | % | | 相 对 于 工 作 尺 寸的允许偏差 | ±5 | -4.6~-3.6 | | |
| | | mm | | | 最大值 ±0.5 | -0.5~-0.4 | | |
| 2 | 边直度 | % | ±0.5 | | | -0.02~+0.04 | | 合格 |
| | | mm | 最大值±1.5 | | | -0.18~+0.29 | | |
| 3 | 直角度 | % | ±0.5 | | | -0.02~+0.04 | | 合格 |
| | | mm | 最大值±2.0 | | | -0.19~+0.34 | | |
| 4 | 表面平整度 | mm | 上凸 | ≤2.0 | | 0.3 | | 合格 |
| | | | 下凹 | ≤2.0 | | 0.3 | | |
| 5 | 表面质量 | ----- | 至少砖的95%的主要区域无明显缺陷 | | | 符 合 | | 合格 |
| 6 | 吸水率 | % | 平均值≤0.5 单个值≤0.6 | | | 0.07 0.05~0.08 | | 合格 |
| 7 | 破坏强度 | N | 当厚度≥7.5mm时,平均值≥1300 | | | 2242 | | 合格 |
| 8 | 断裂模数 | MPa | 平均值≥35 单个值≥32 | | | 35 34~37 | | 合格 |
| 9 | 抗釉裂性 | ----- | 经试验应无釉裂 | | | 符 合 | | 合格 |
| 10 | 耐污染性 | ----- | 最低3级 | | | 5级 | | 合格 |
| 11 | 耐家庭化学试剂和游泳池盐类 | ----- | 不低于GB级 | | | GA级 | | 合格 |
| 12 | 地砖摩擦系数 | ----- | 单个值≥0.50 | | | 干法 | 0.59~0.61 | 合格 |
| 13 | 内照射指数I _{Ra} | ----- | A类装饰装修材料: I _{Ra} ≤1.0 | | | 0.5 | | A类 |
| | | | B类装饰装修材料: I _{Ra} ≤1.3 | | | | | |
| | 外照射指数I _r | ----- | A类装饰装修材料: I _r ≤1.3 | | | 0.9 | | |
| | | | B类装饰装修材料: I _r ≤1.9 | | | | | |
| | | | C类装饰装修材料: I _r ≤2.8 | | | | | |

Paving Construction

| |
|--|
| <p>一.检查</p> <p>铺贴前请检查包装标示的产品型号、等级、尺码及色号是否统一，如有问题，请与朗途陶瓷服务部门或经销商联系。</p> |
| <p>二.地面处理</p> <p>地面要充分浇湿，但通体大理石无需浸湿；要在墙面上打水平线并在地上放线预排，保证各个房间的地砖在同一水平面上。</p> |
| <p>三.砖面处理</p> <p>通体大理石铺贴前预先打上防污蜡，可提高砖面抗污能力。</p> |
| <p>四.材料</p> <p>建议采用325号水泥，水泥与细沙比例约为1：3，白色系列抛光砖建议使用白色水泥，以达到和色的效果。</p> |
| <p>五.铺贴</p> <p>图案拼花特征明显的，请认准其拼花特征统一方向铺贴，图案拼花特征不明显或无图案的请结合施工效果要求铺贴；铺贴完12小时后敲击砖面检查，发现有空鼓声应重新铺贴；铺贴完工后，应及时将残留在砖面上的水泥污渍抹去。铺完24小时后才可行走，并需要养护4-5天，防止受外力影响造成地面局部不平。</p> |